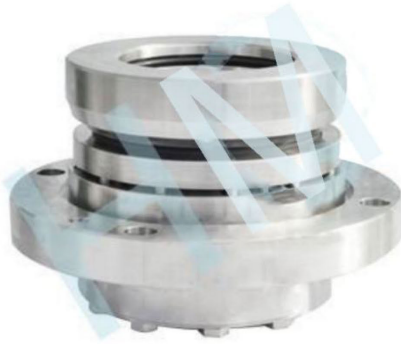


## HMKSB-07



Type : KSB Mechanical Seal  
Replacement: Suit for KSB Pumps  
Temperature :  $\leq 200^{\circ}\text{C}$   
Pressure :  $\leq 4\text{Mpa}$   
Speed :  $\leq 3000\text{r/min}$   
Material : Q1,Q2,A,B,U1,U2,P,E,V,T,F,G,T2,M5

### \* Product description:

This type feed water pump mechanical seal smooth operation, reasonable design, safe and reliable, and put into operation for many years happened affect the safe operation of the host at the end of the accident, provides the guarantee the safety and stability of operation of the coal-fired power plant.

### \* Applicable host:

HMKSB (KSB) factory.

### \* Product features:

Smooth operation  
Safe and reliable

### \* Product parameters:

Hot water, clear water.  
Temperature:  $\leq 200^{\circ}\text{C}$   
Pressure:  $\leq 4\text{ Mpa}$  Wash:  
P32  
Speed:  $\leq 3000\text{ r/min}$ .  
Diameter: 105 mm



### \* Application industry:

Thermal power generation.

### \* Working condition pump position:

Cooling pump, condensate pump, condensate pump.



[www.hengmiseal.com](http://www.hengmiseal.com)